



March 2026

Membership Meeting



WE MISS YOU WHEN
**YOU'RE NOT
HERE!**



ATTENDANCE COUNTS!



Communicable disease update OC-APIC

Anissa Davis, MD, MPH
Deputy Health Officer/Medical Director
OC Health Care Agency

March 3, 2026

Public health updates for orange county



Measles

Respiratory Virus Season

measles



Measles is one of the most contagious diseases known to man



As vaccination rates decline globally and nationally, measles cases in US have increased significantly



Therefore, increased likelihood that someone who could have measles seeks care in your facility



There's some activities and plans that are important to put in place now to be prepared

MEASLES

IT ISN'T JUST A LITTLE RASH



Measles can be dangerous, especially for babies and young children.

Measles symptoms typically include:



High fever
(may spike to more than 104°F)



Cough



Runny nose



Red and/or watery eyes



Rash
(breaks out 3-5 days after symptoms begin)

And Adults with severely weakened immune systems

Measles can be serious.

Measles can cause severe health complications, including pneumonia, swelling of the brain (encephalitis) and death.



1 out of 5 people who get measles will be hospitalized.



1 out of every 20 children with measles will get pneumonia, the most common cause of death from measles in young children.



1 out of every 1,000 people with measles will develop brain swelling, which may lead to brain damage.



1 to 3 out of 1,000 people with measles will die.

Long-term complications

A very rare, but deadly disease called subacute sclerosing panencephalitis can develop 7 to 10 years after a person has recovered from measles.



www.cdc.gov/measles



You have the power to protect your child.

Provide your children with safe and long-lasting protection against measles by making sure they get the measles-mumps-rubella (MMR) vaccine. Talk to your healthcare provider.

Protect yourself, and those around you who might have weakened immune systems by making sure you and others in your household are up to date with the MMR vaccine.



Epi Risk Factors

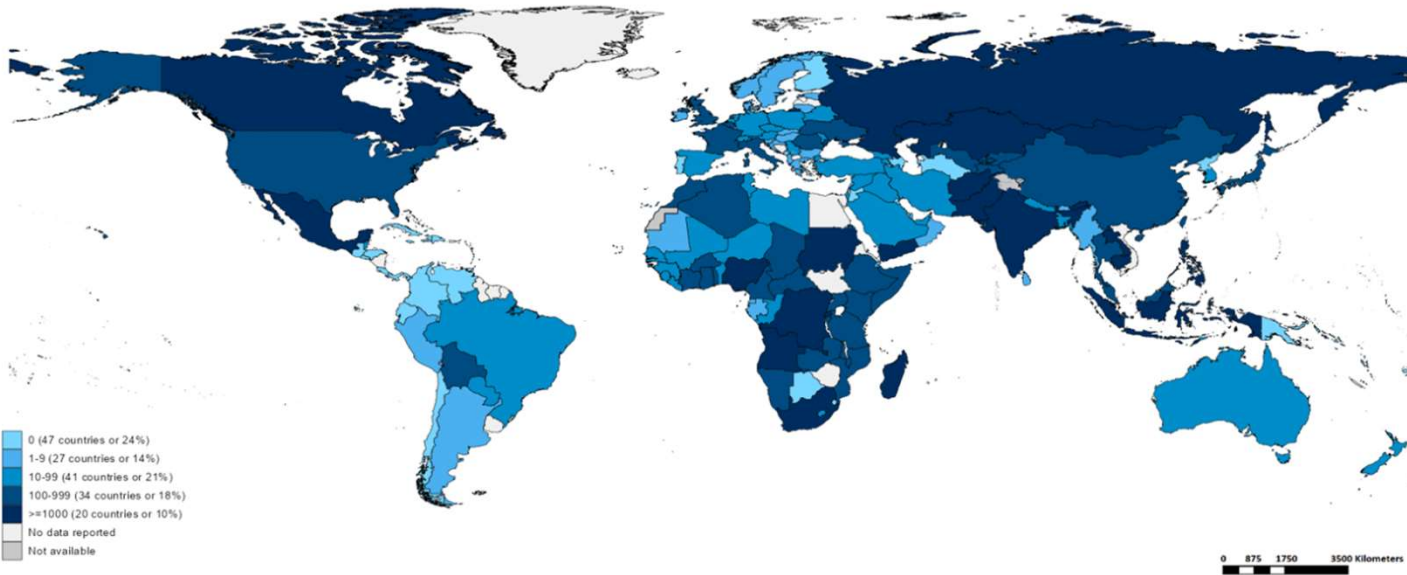
In the past 21 days:

- Known contact with measles case or an ill person with fever and rash
- Contact with an international visitor who arrived in US in the past 21 days
- Travel outside the US
- Domestic travel through an airport
- Visited a US venue popular with international visitors, such as theme parks, tourist attractions
- Lives in or visited a US community where there are measles cases

HEALTH CARE
AGENCY | 7

Measles Globally, 6/25 thru 11/25

Number of Reported Measles Cases (Last 6 months)



Country	Cases*
Indonesia	14,406
Yemen	9,277
Mongolia	8,483
Pakistan	8,310
India**	8,184
Angola	5,823
Nigeria	4,676
Mexico	3,164
Russian Federation	2,939
Lao People's Democratic Republic	2,859



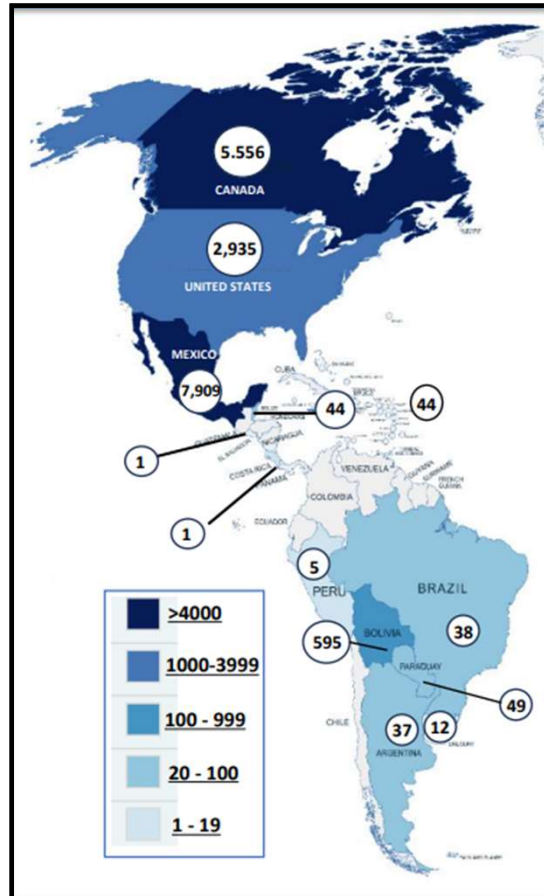
Map production: World Health Organization, 2026. All rights reserved
Data source: IVB Database

Disclaimer: The boundaries and names shown and the designations used on this map do not imply the expression of any opinion whatsoever on the part of the World Health Organization concerning the legal status of any country, territory, city or area or of its authorities, or concerning the delimitation of its frontiers or boundaries. Dotted and dashed lines on maps represent approximate border lines for which there may not yet be full agreement.

Measles Regionally

The Americas, 2025-2026

MORBIDITY AND MORTALITY*		
COUNTRY	CONFIRMED CASES	DEATHS
NORTH AMERICA – 3 ACTIVE OUTBREAKS		
<u>US</u>	2,935 (+206)	3
<u>CANADA</u> ^{1,2,3}	5,556	2
<ol style="list-style-type: none"> 1. Includes the probable cases reported by Canada under the clinically confirmed column, due to alignment with PAHO's case definition 2. Only Ontario's numbers for 2025 are included. 3. Canada lost its measles elimination status on 10 November 2025 due to the ongoing measles outbreak that began in October 2024 		
<u>MEXICO</u>	7,909 (+492)	26
CENTRAL AMERICA – NO ACTIVE OUTBREAKS		
<u>BELIZE</u>	44	0
<u>COSTA RICA</u>	1	0
<u>GUATEMALA</u>	1	0
SOUTH AMERICA – 2 ACTIVE OUTBREAKS		
<u>BOLIVIA</u>	595	
<u>ARGENTINA</u>	37	0
<u>BRAZIL</u>	38	0
<u>PARAGUAY</u>	49	0
<u>PERU</u>	5	0
<u>URUGUAY</u>	12	0
THE CARIBBEAN		
<u>THE CARIBBEAN</u>	44	0
TOTAL	17,226	31



CDC Measles data from 2025-2026

U.S. Cases

	2026 To date	2025 Full year
Total Cases	1136	2281
Age		
Under 5 years	278 (24%)	584 (26%)
5-19 years	653 (57%)	1012 (44%)
20+ years	198 (17%)	672 (29%)
Age unknown	7 (1%)	13 (1%)
Vaccination Status		
Unvaccinated or Unknown	92%	93%
One MMR dose	4%	3%
Two MMR doses	4%	4%

U.S. Hospitalizations

	2026	2025
Total Hospitalized	5% (58 of 1136 cases)	11% (242 of 2281 cases)
Percent of Age Group Hospitalized		
Under 5 years	7% (20 of 278)	18% (106 of 584)
5-19 years	3% (17 of 653)	6% (57 of 1012)
20+ years	10% (20 of 198)	12% (79 of 672)
Age unknown	14% (1 of 7)	0% (0 of 13)

U.S. Deaths

	2026	2025
Total Deaths	0	3

FROM [HTTPS://WWW.CDC.GOV/MEASLES/DATA-RESEARCH/INDEX.HTML](https://www.cdc.gov/measles/data-research/index.html) (LAST UPDATED FEBRUARY 20, 2026)

Measles cases nationally, statewide,
and locally

Location	2026 # Cases	Change From Previous Week	Notes
US	1136	+154	CDC as of 2/26/26 Ongoing outbreak So Cal/UT/FL/AZ
California	21	+2	CDPH as of 2/23/26
Orange County	2	0	
95% unvaccinated/unknown			

Measles- Orange County Cases and Exposures

- 1/28 Adult who recently traveled internationally
 - Sites case visited during infectious period:
 - gym
 - Urgent care
 - Hospital
 - 159 total contacts
- 1/30 Toddler without travel
 - History of visitation to local public venue with many other international visitors during incubation period
 - Patient isolated and fully vaccinated provider took sample at car
 - No known exposures during infectious period
- 1/31 Los Angeles County Case
 - International traveler who visited Disneyland while infectious 1/28/26
 - 65 known exposures (restaurant staff)
- 2/6 Confirmed Case Visitor to OC
 - Sites visited while infectious:
 - Disneyland
 - Dance studio
 - Medical clinic
 - 84 total contacts



714-834-8180 (24/7)

- **CONSIDERING MEASLES**

- What is the local epidemiology
 - Make sure you are signed up for [CD Health Alerts](#)
- Known exposure to measles
- Travel International? Domestic?
- Visiting large venues (concerts, amusement parks)
- Measles Immunity status



If you are at all considering measles,
CALL Communicable Disease Control (CDCD)
IMMEDIATELY!



CD HEALTH ALERT

Critical Communicable Disease Information for Orange County Medical Providers

Infectious Measles Case Visits Orange County

February 7, 2026

The OC Health Care Agency (HCA) received notification of a confirmed case of measles who visited Orange County (OC). While infectious, this individual visited the following OC locations:

What happens if there's a case

- **72 hour to 6-day** window to provide **prophylaxis** (MMR or IG)
- Need to document **when and where** patient was in facility
- **Line list of exposed staff and their immunity documentation**
 - Those with no documented immunity by day 5 after exposure they will be **excluded from work** for up to **21 days**
- ★ – Employer's responsibility
 - Line list of **exposed patients and visitors**
 - Particularly concerned for **infants, pregnant people, severely immunocompromised**
 - We may need assistance reaching patients
 - Plan for logistics of serologic testing, IVIG and IMIG and MMR PEP

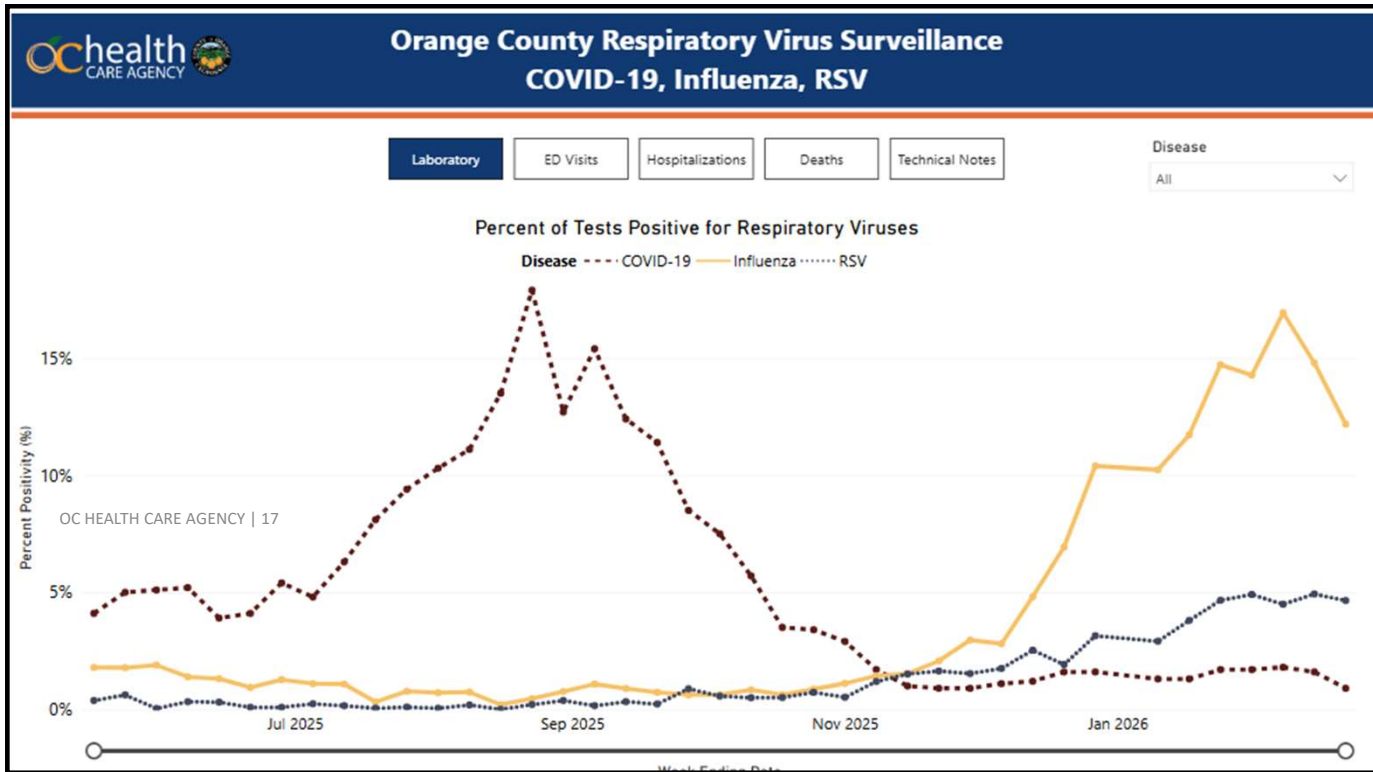


What Providers & Facilities Can do now

- **Document staff immune status NOW**
 - This will help avoid work exclusions
 - Give people time to find their documentation or to get titers drawn
- **Prepare for potential increased staffing needs to respond**
 - A single case linked to your facility can require significant effort and coordination with local officials for rapid notification and to ensure safety and health of staff and visitors.
- **Adjust clinical workflows and patient triage to minimize potential measles exposures**
 - Consider prescreening protocols
 - For patients with cough, conjunctivitis, fever or rash, recent visit to areas with outbreaks
 - Measles vaccination status
 - Consider:
 - Waiting outside
 - Isolation protocols
 - PPE protection

Questions?

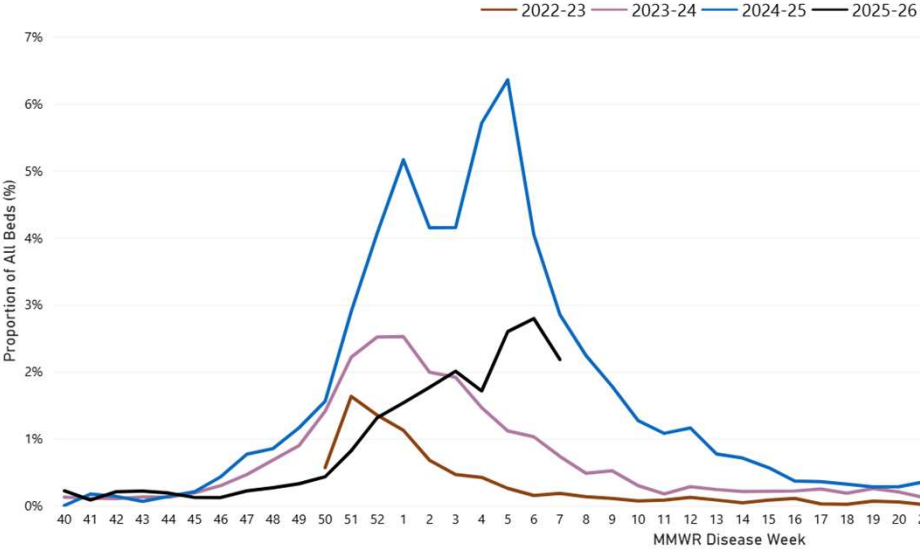
Respiratory virus season



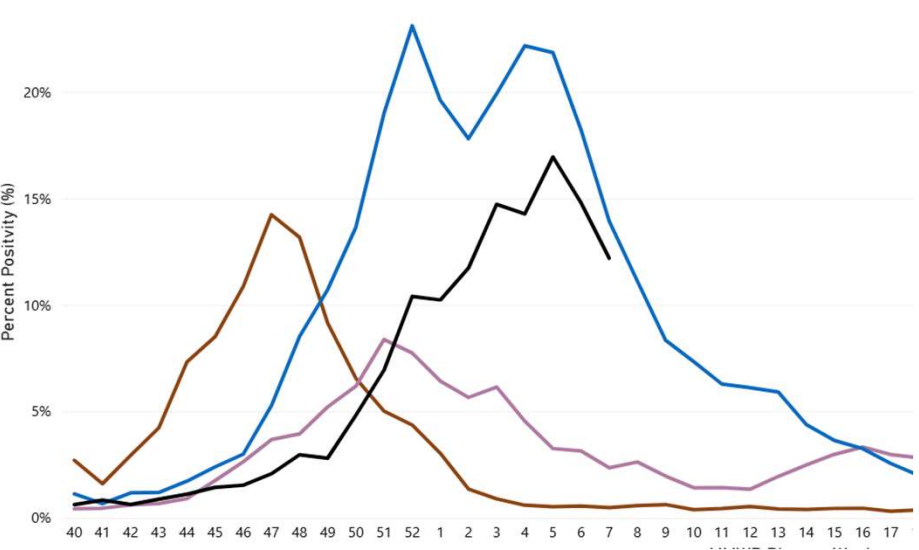
[Respiratory Virus Data | Orange County California - Health Care Agency](#)

influenza

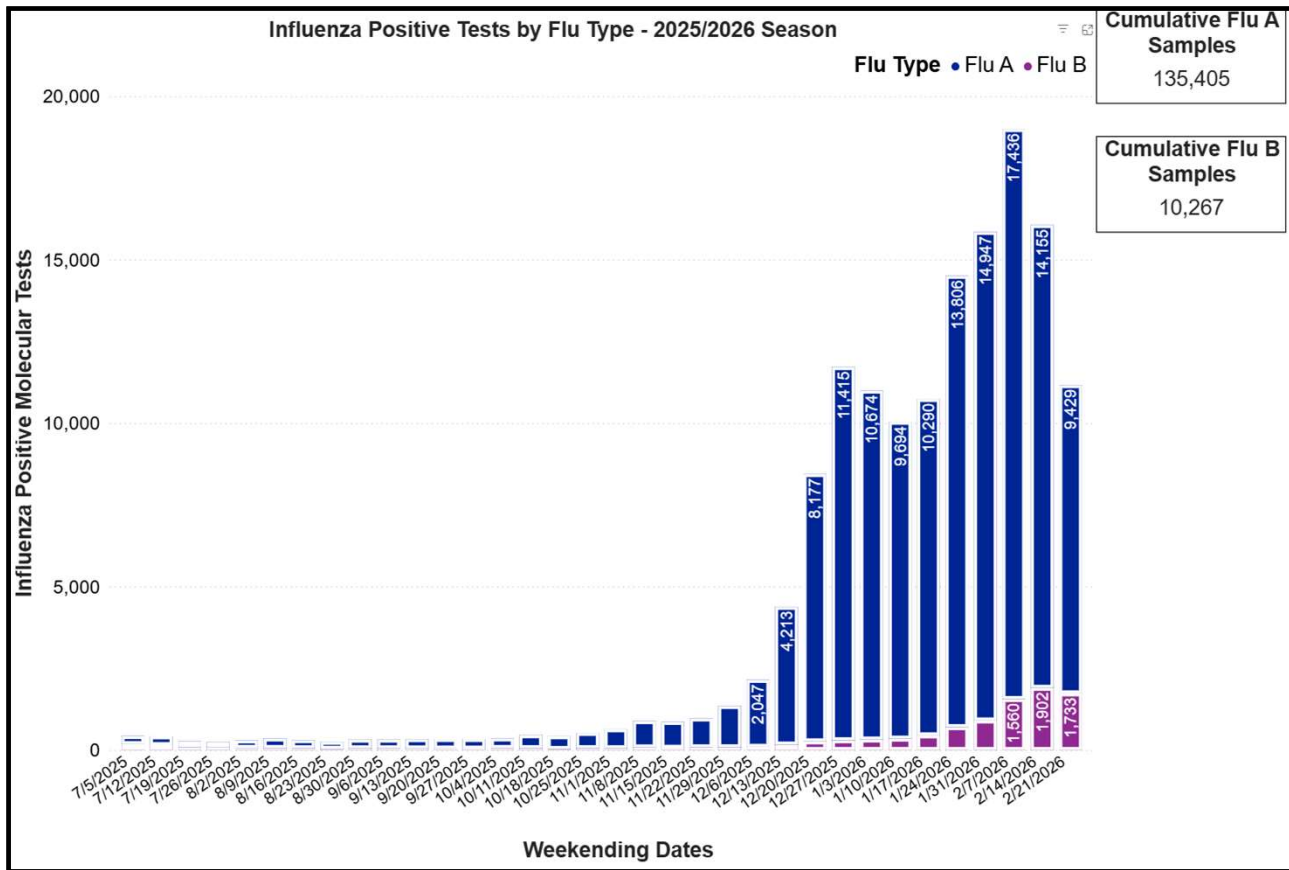
Percent positivity is decreasing



Hospitalizations decreasing

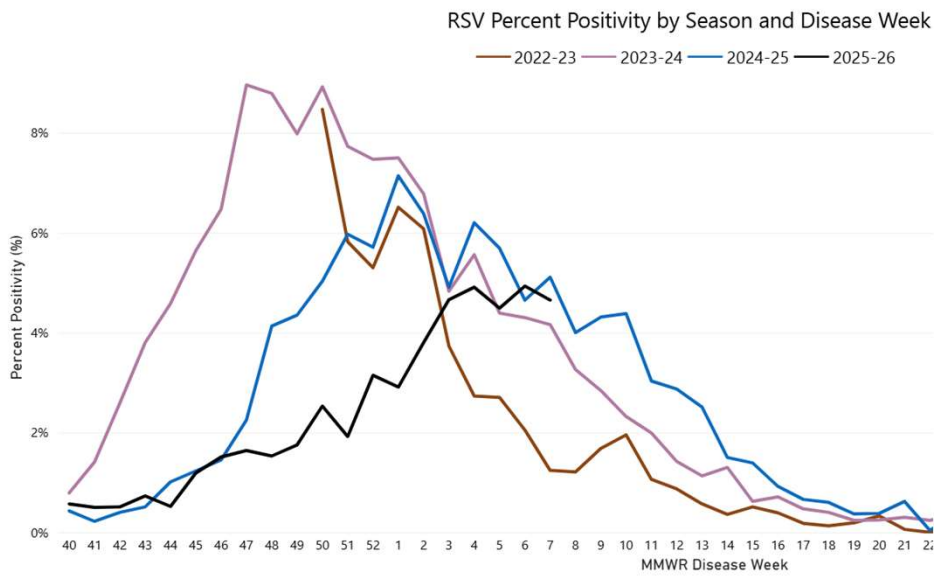


Flu b is increasing

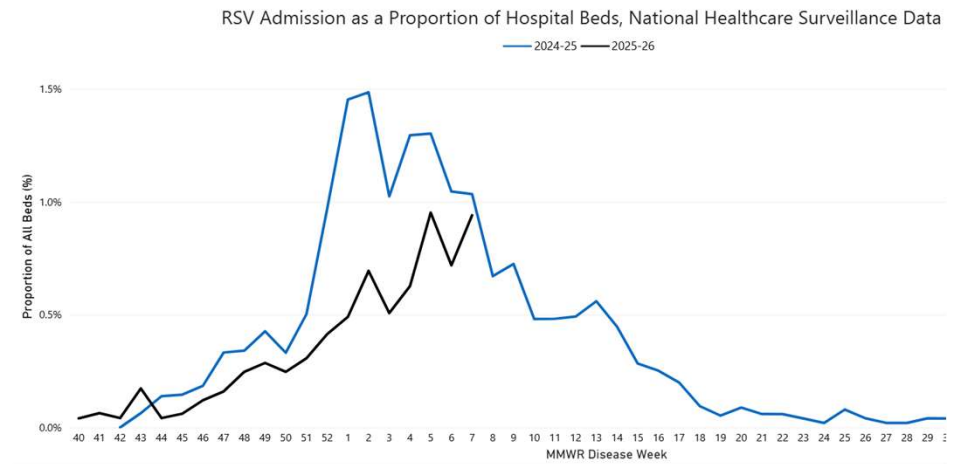


RSV activity remains elevated

Percent positivity stable



Hospitalizations continue



Thank you!



Membership Engagement APIC 2026



<https://app.sli.do/event/cfWTxqE9F3aBmwmEK7exxw>

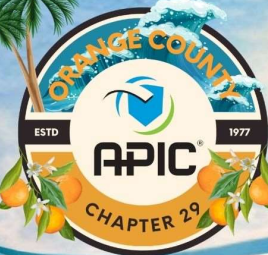
Membership Engagement APIC 2026





Education Awards Open

Apply Today



ORANGE COUNTY APIC EDUCATION AWARDS

OPEN 2/15/2026 – 3/31/2026

\$5,100 IN 6 EDUCATION AWARDS AVAILABLE

Requires education to be provided to the chapter and used within the calendar year.

✓ Award funds may be used for:

- 📅 registration fees
- ✈️ travel expense
- 📖 reference books

Funds may not be used to pay for certification fees.

- **\$1,500 Dr. Matthew Zahn Award**
- **\$1,000 Early/Mid Career**
- **\$1,000 Advanced Career**
- **\$600**
- **\$500**
- **\$500**

Scan to apply and learn more!





Membership Meeting Adjourned

